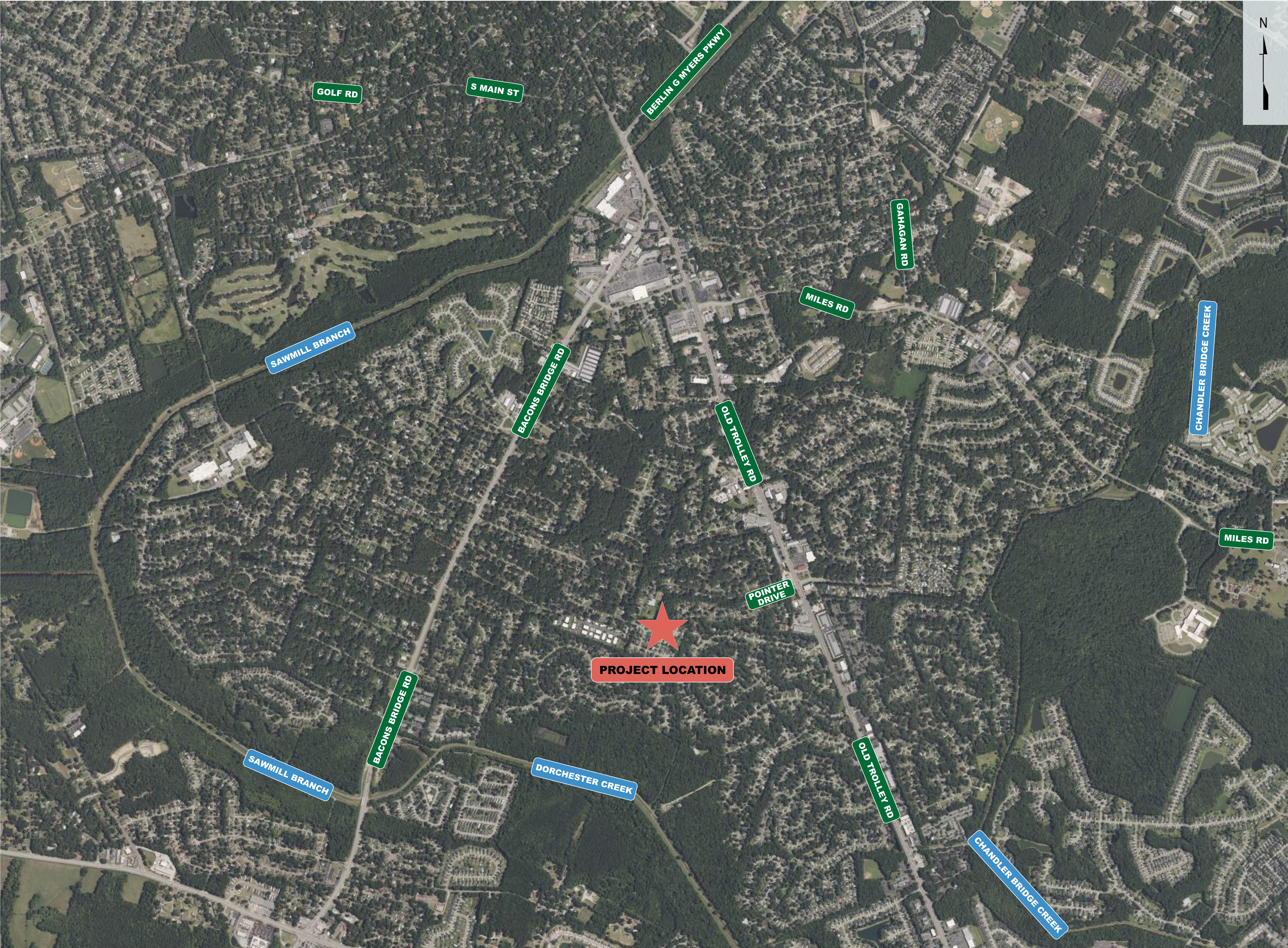


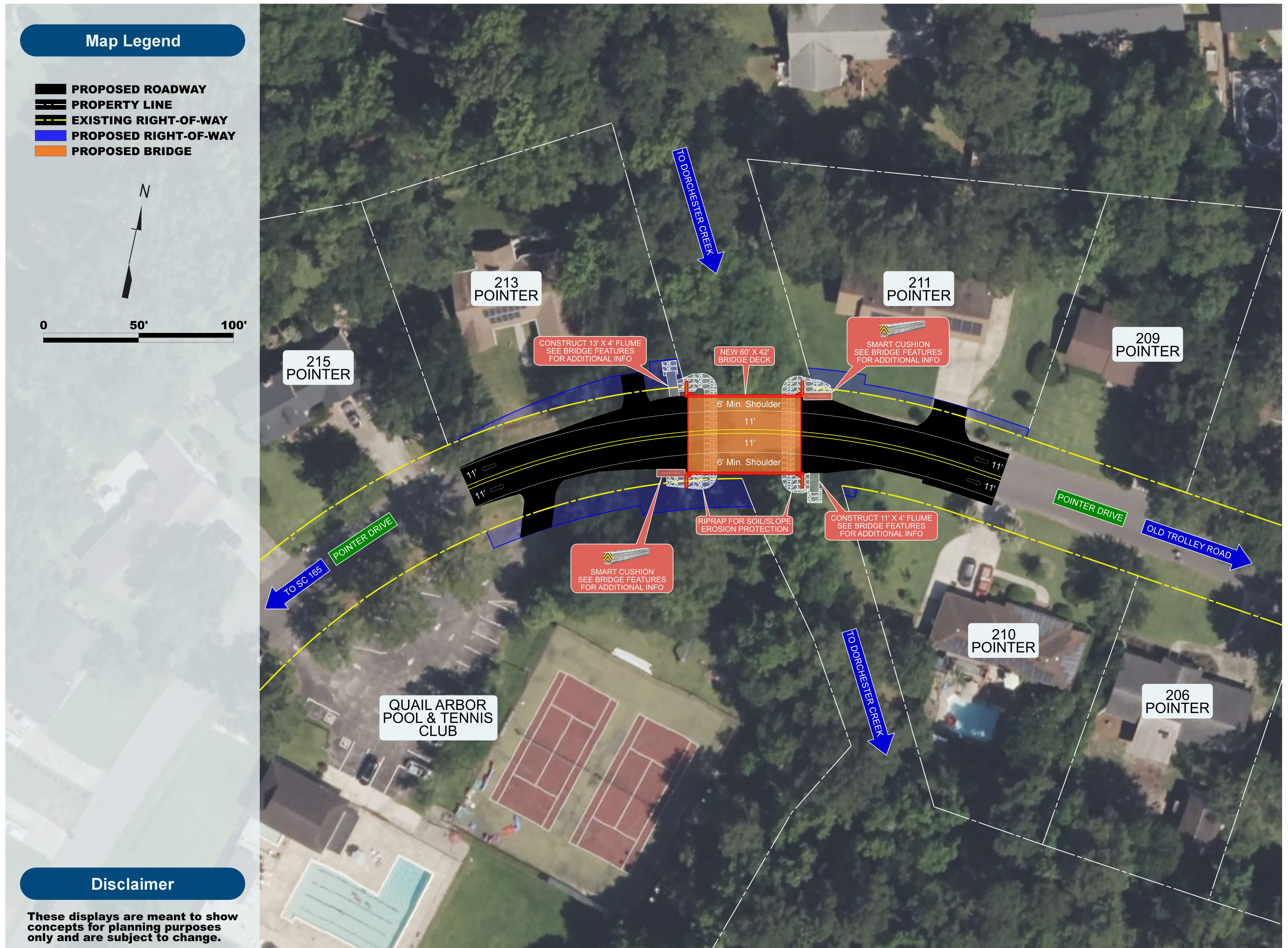
POINTER DRIVE BRIDGE REPLACEMENT

Project Vicinity Map



POINTER DRIVE BRIDGE REPLACEMENT

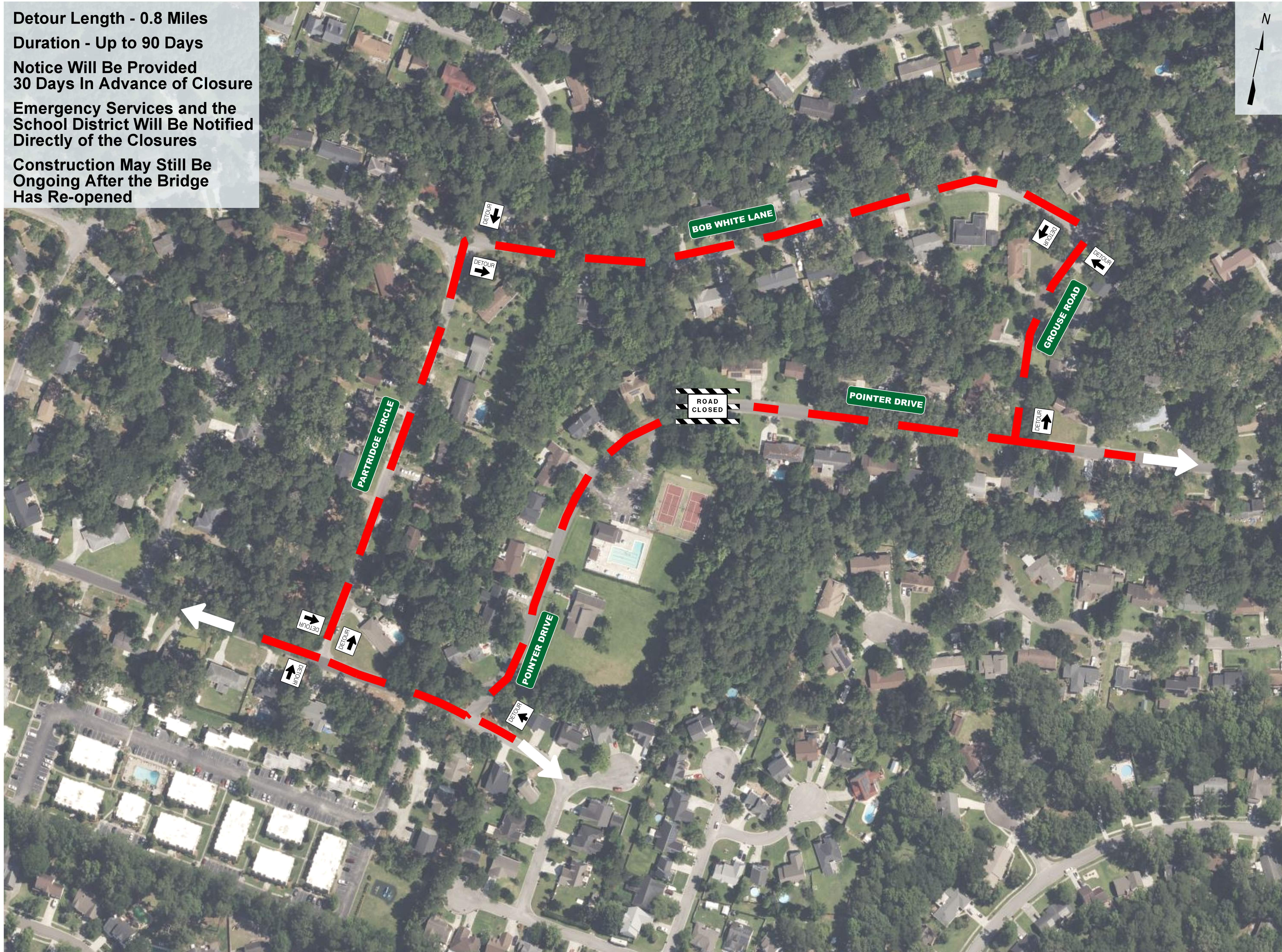
Plan View



POINTER DRIVE BRIDGE REPLACEMENT

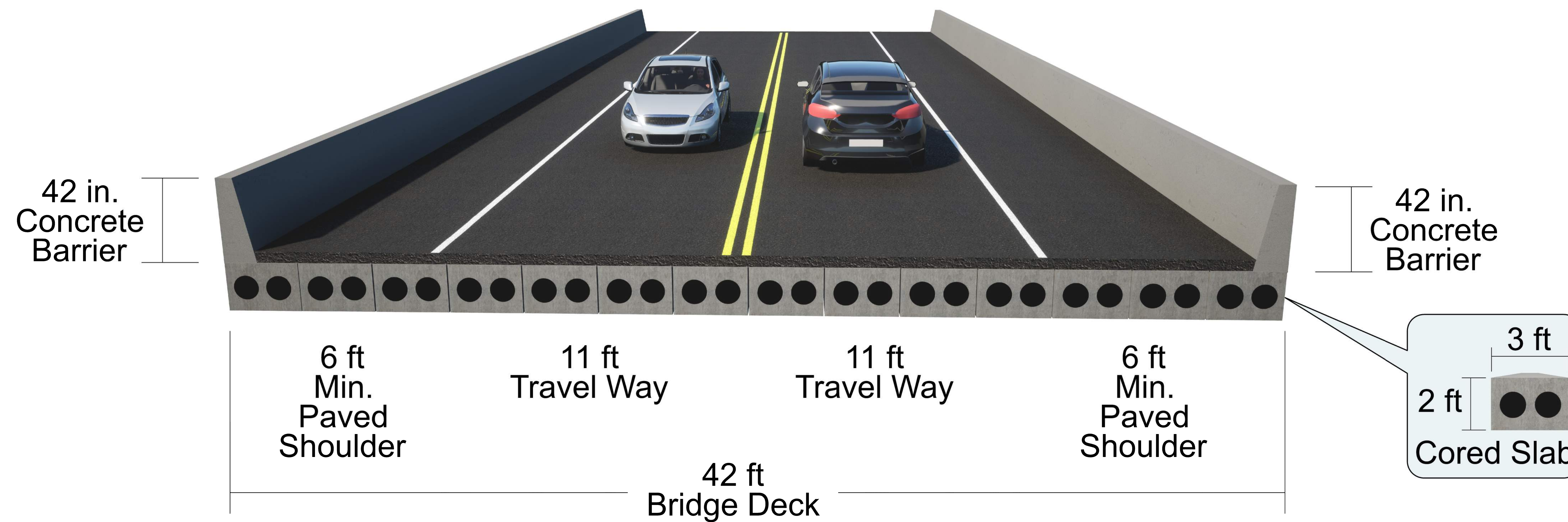
Traffic Control and Detour Plan

Detour Length - 0.8 Miles
Duration - Up to 90 Days
Notice Will Be Provided
30 Days In Advance of Closure
Emergency Services and the
School District Will Be Notified
Directly of the Closures
Construction May Still Be
Ongoing After the Bridge
Has Re-opened

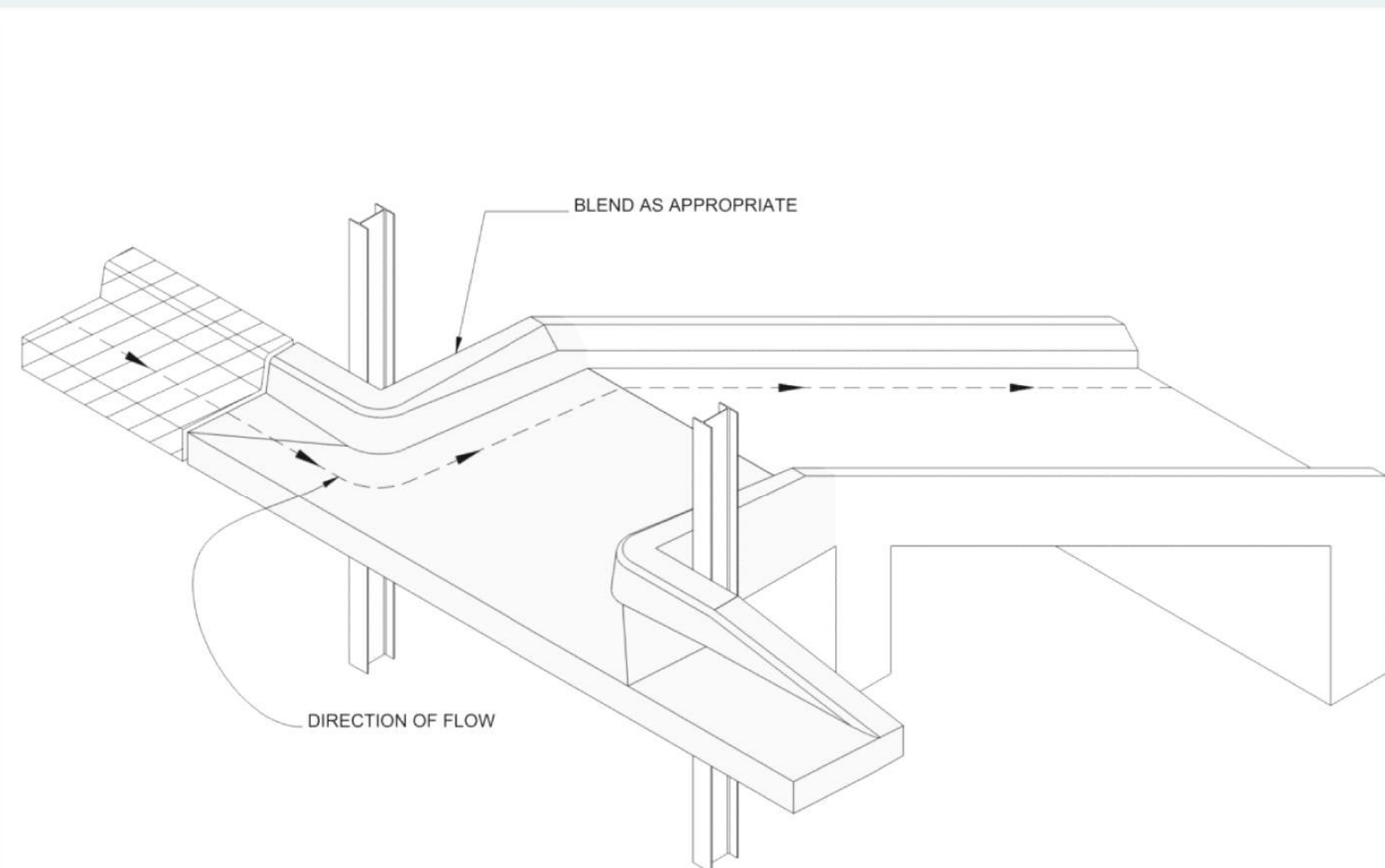


POINTER DRIVE BRIDGE REPLACEMENT

Bridge Features



BRIDGE DECK CROSS SECTION



STANDARD FLUME AND INLET



STANDARD GUARDRAIL END TREATMENTS TYPICALLY EXTEND APPROXIMATELY 70 FT FROM THE BRIDGE END TO MEET FEDERAL GUIDELINES.

DUE TO THE BRIDGE'S PROXIMITY TO DRIVEWAYS AND THE NEED TO MINIMIZE RIGHT-OF-WAY IMPACTS, SMART CUSHIONS ARE BEING USED TO REDUCE THE PROJECT FOOTPRINT. SMART CUSHIONS MEET FEDERAL SAFETY PERFORMANCE STANDARDS FOR IMPACT TREATMENTS.

**DIMENSIONS:
LENGTH - 13 FT - 6 INCHES
WIDTH - 24 INCHES
HEIGHT - 34 INCHES**

SMART CUSHION